

S:\Ports\GIS\projects\RBE\round2\site\hazard\endstate\current\agreement.mxd 1/20/2004 CORPUSS

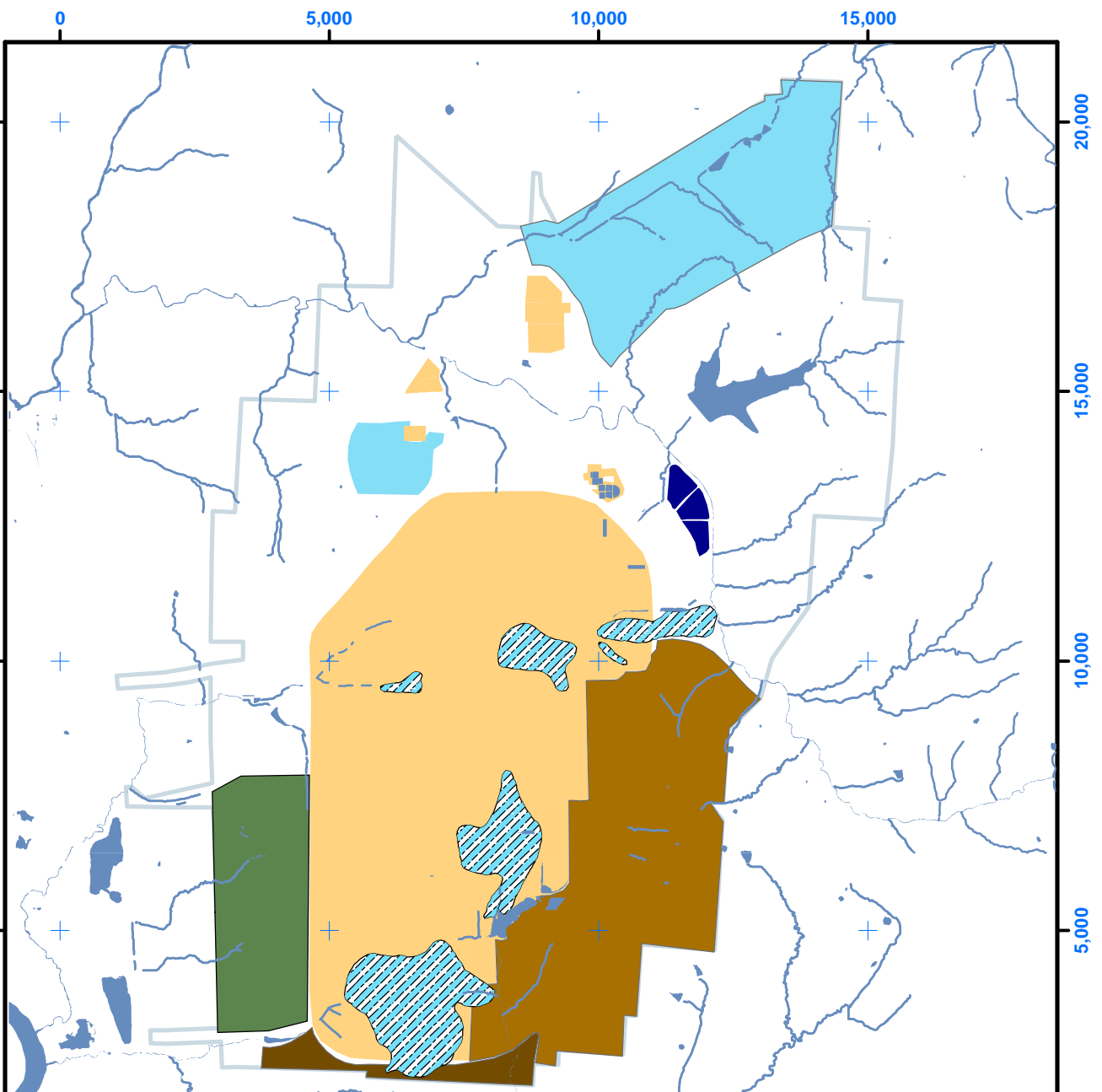











Figure 5.1a. Site-Wide Hazard Specific Map - Current Baseline End State.

Legend

-  Area of Concern - Plume
-  DOE-PORTS Boundary
-  Water
-  Ecological/Preservation
-  Existing Industrial
-  Large Scale Office/Industrial
-  Rail/Industrial
-  Retail and Service
-  Small Scale Office/Industrial

Author: Steven Corpus
 Map Completion Date: 1/20/04
 Scale: 1 in = 3,000 Feet
 Projection: PORTS Plant Coordinate System Feet

Data Source Reference Numbers:
 1,2,3,4,5,12,23

